

# LESTER P.U.D. - PLAT ONE

SITUATE IN THE SOUTHEAST ONE-QUARTER OF SECTION 35,  
TOWNSHIP 45 SOUTH, RANGE 42 EAST, PALM BEACH COUNTY, FLORIDA.  
SHEET 4 OF 9  
JULY, 1999

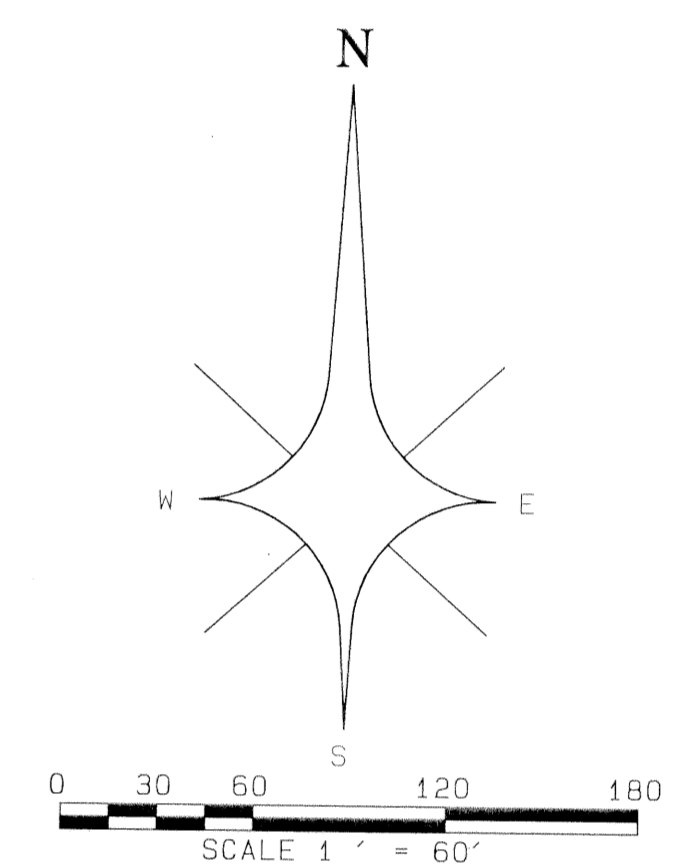
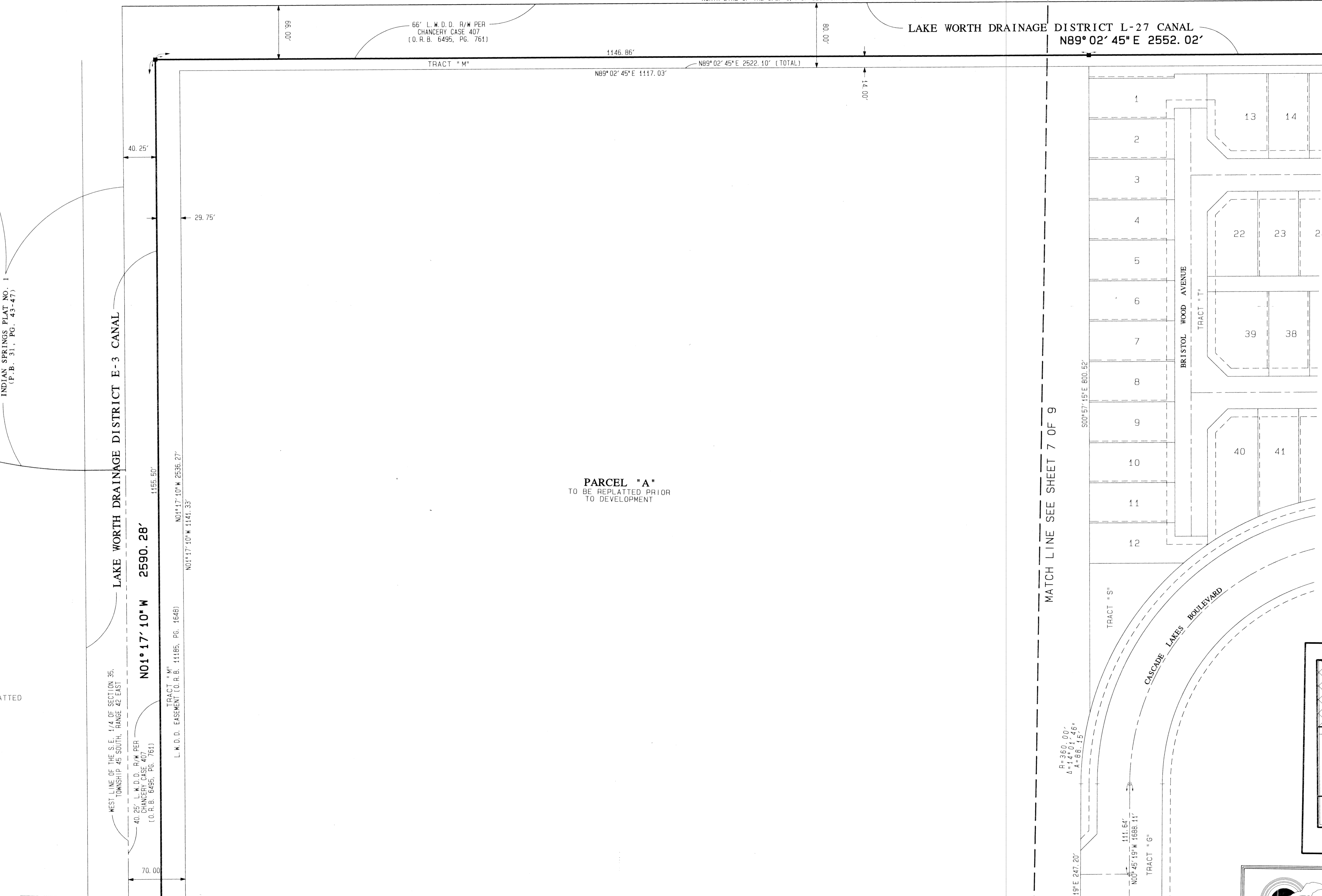
0742-004

54

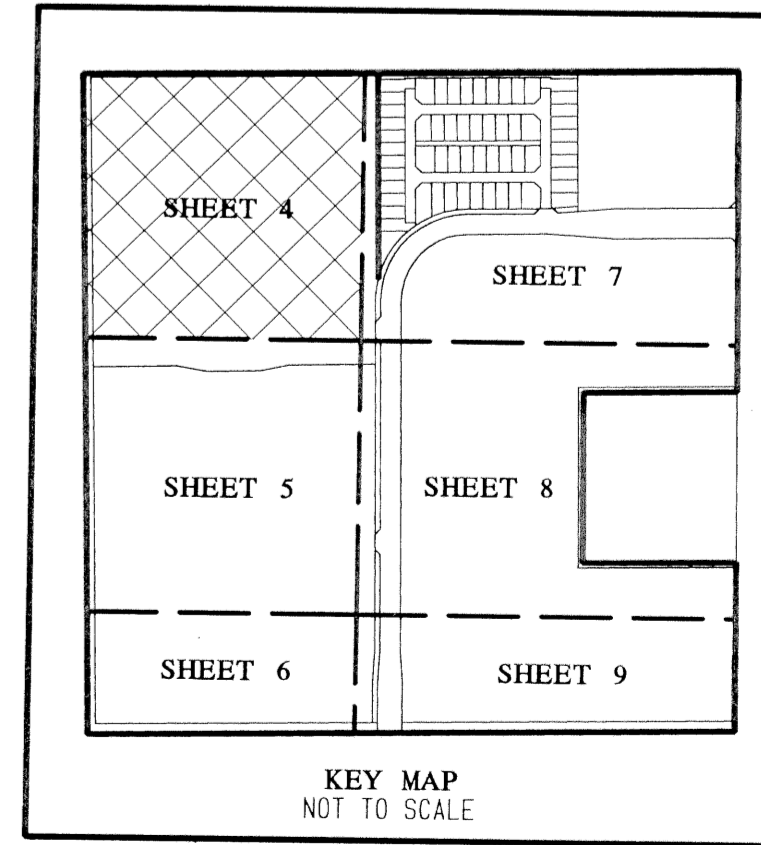
INDIAN SPRINGS PLAT NO. 1  
(P.B. 31, PG. 43-47)

NORTH LINE OF THE S.E. 1/4 OF SECTION 35 TOWNSHIP 45 SOUTH, RANGE 42 EAST

STATE OF FLORIDA } SS  
COUNTY OF PALM BEACH }  
THIS PLAT WAS FILED FOR  
RECORD AT \_\_\_\_\_ DAY OF  
THIS \_\_\_\_\_ AD, 1999 AND  
DULY RECORDED IN PLAT BOOK  
\_\_\_\_\_ ON PAGES \_\_\_\_\_ AND  
\_\_\_\_\_  
DOROTHY H. WILKEN, CLERK  
CIRCUIT COURT  
BY: \_\_\_\_\_ DC



- LEGEND:
- A = CENTRAL ANGLE/DELTA
  - C = CENTERLINE
  - CH = CHORD
  - D.B. = DEED BOOK
  - D.E. = DRAINAGE EASEMENT
  - F.P.&L. = FLORIDA POWER AND LIGHT COMPANY
  - A = ARC LENGTH
  - L.A.E. = LIMITED ACCESS EASEMENT
  - L.M.A.E. = LAKE MAINTENANCE ACCESS EASEMENT
  - L.M.E. = LAKE MAINTENANCE EASEMENT
  - L.W.D. = LAKE WORTH DRAINAGE DISTRICT
  - N.R. = NON-RADIAL
  - N.T.S. = NOT TO SCALE
  - O.R.B. = OFFICIAL RECORDS BOOK
  - P.B. = PLAT BOOK
  - PG. = PAGE
  - P.O.B. = POINT OF BEGINNING
  - P.O.C. = POINT OF COMMENCEMENT
  - R = RADIUS (RADI)
  - R.F. = RADIAL TO FRONT LOT LINE
  - R.R. = RADIAL TO REAR LOT LINE
  - R/W = RIGHT OF WAY
  - U.E. = UTILITY EASEMENT
  - W.C. = WITNESS CORNER
  - Z.L.L.M.E. = ZERO LOT LINE MAINTENANCE EASEMENT
  - = PERMANENT CONTROL POINT (PCP)  
PCP LB4820
  - = PERMANENT REFERENCE MONUMENT (PRM)  
SET FPM LB4820



Lester PUD - Plat 1  
PAGE 54  
FLOOD MAP # 20513  
FLOOD ZONE B  
TOWNSHIP 45 SOUTH  
RANGE 42 EAST  
ZIP CODE 33437  
TAZ 757  
PUD NAME Lester PUD

PROFESSIONAL  
SURVEYORS  
AND MAPPERS  
LB4820  
**ATLANTIC - CARIBBEAN MAPPING, INC.**  
3062 JOG ROAD GREENACRES, FLORIDA 33467  
(561) 954-7884; FAX (561) 964-1989

MATCH LINE SEE SHEET 5 OF 9

MATCH LINE SEE SHEET 7 OF 9